

Valentine's Day spelling game

Please visit [themeasuredmom.com](https://www.themeasuredmom.com) to learn how to use this printable:

<https://www.themeasuredmom.com/free-valentines-day-spelling-game/>

Thank you for respecting our Terms of Use



The unauthorized reproduction or distribution of a copyrighted work is illegal. Criminal copyright infringement, including infringement without monetary gain, is investigated by the FBI and is punishable by fines and federal imprisonment.

- **YOU MAY** use this file for your own personal, non-commercial use.
- **YOU MAY** print as many copies as you'd like to use in your classroom, home, public library, or tutoring setting.
- **YOU MAY** download this file by visiting <https://www.themeasuredmom.com>.
- **YOU MAY** save this file on your computer.
- **YOU MAY** share the link to the web page where the printable can be found.
- **YOU MAY NOT** link directly to the pdf file. Instead, link to the web page where it can be downloaded.
- **YOU MAY NOT** alter this file or claim this file as your own.
- **YOU MAY NOT** sell or in any way profit from this file. It is also illegal to print this file and sell the printed copy.
- **YOU MAY NOT** use this or any other printable from The Measured Mom on Outschoool.
- **YOU MAY NOT** e-mail this file OR store it on any location where others can download it (Amazon Inspire, Dropbox, Facebook groups and forums, etc.). If you would like to use this file for distance learning, please contact us directly for permission at <https://www.themeasuredmom.com/contact/>.

Credits

PinkPueblo



Check out these resources from the shop!

EDITABLE SIGHT WORD GAMES

150 SEASONAL GAMES

Includes games like FOLLOW THE PATH, TIC-TAC-TOE, SIGHT WORD BUMP, SNAKES & LADDERS, and ROLL, READ & COVER.

SIGHT WORD practice mats

BUNDLE OF 220 SIGHT WORDS

Includes an editable mat!

Includes SIGHT WORD practice mats for Pre-Kindergarten, Kindergarten, and First Grade. Includes a BUNDLE OF 220 SIGHT WORDS.

MYSTERY PROBLEM SOLVING GAMES

PICTURES & CLUE CARDS FOR GR. 1-3

Includes games like Guess the Mystery Ball, Guess the Mystery Slumber Party, and Guess the Mystery Drink.

NO-PREP MATH & LITERACY GAMES

120 GAMES STUDENTS CAN PLAY ALONE OR IN PAIRS

Includes word cards (buck, bunk, stuck, hung, crush, bump, jump, drum, plug), a word search (What's the Start of a Word?), and a dice game (Find the End Paragraph).

HANDWRITING WORKSHEETS

GIANT BUNDLE OF 330 WORKSHEETS

Includes handwriting practice sheets for letters Ee, Hh, and Aa, and a cartoon child writing.

Find me here

Blog: <https://www.themeasuredmom.com/>

Membership: <https://membership.themeasuredmom.com/>

Podcast: <https://www.themeasuredmom.com/triplerteachingpodcast/>

Teaching Every Reader course: <https://www.teachingeveryreader.com/>

Teaching Every Writer course: <https://www.teachingeverywriter.com/>

Facebook: <https://www.facebook.com/themeasuredmom/>

Pinterest: <https://www.pinterest.com/themeasuredmom/>

Instagram: <https://www.instagram.com/themeasuredmom/>

Contact: <https://www.themeasuredmom.com/contact/>

Printing trouble?

If the file is printing strangely (usually with extra black boxes), please download the free Adobe Reader to your computer. Open and print using that program. 99% of the time, this solves it!

You can get it here: <https://get.adobe.com/reader/>



You're invited to join The Measured Mom Plus!

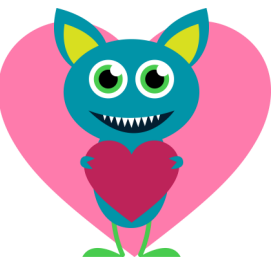
- our membership site for Pre-K to 3rd grade educators -



- ✓ **Save hours of time** with our one-click printable library. You'll find hundreds of math and literacy resources for Pre-K through third grade.
- ✓ Get **free no-print resources** that are perfect for at-home use and distance learning.
- ✓ Recharge your teaching with on-demand **video workshops and mini-courses** that you can watch 24/7.
- ✓ **Save 33% on all products from The Measured Mom Shop.**

[LEARN MORE](#)

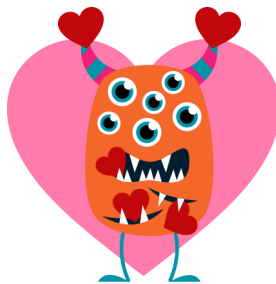




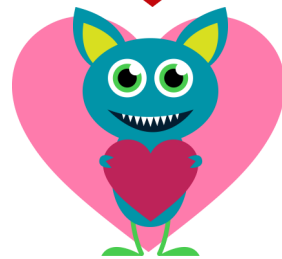
Valentine's Day Spelling Game

Directions:

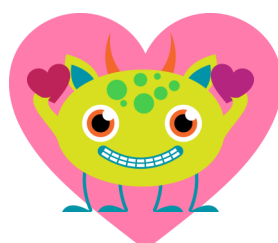
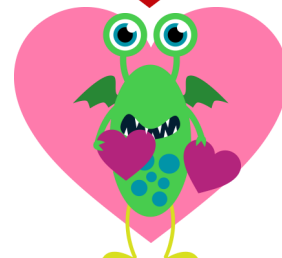
1. Put your playing piece on Start. On your turn, the player to your left reads you a spelling word. If you spell it correctly, roll the die and move ahead. If not, stay where you are.
2. If you land on a plain colored heart, your turn is over.
3. If you land on a monster, the other player reads you a Valentine's Day word. If you get it correct, move ahead the number of spaces on the card.
4. Whoever reaches Finish first, wins! If it's a quick game, play again.
5. Alternate version: instead of moving ahead when you spell a Valentine word correctly, collect candy hearts. Keep moving around the board until a player collects 10 (or pick a different number) hearts.



Place spelling
word cards here.



Place Valentine
word cards here.





gift

+1



red

+1



hug

+1



pink

+1



card

+1



flower

+1



love

+1



rose

+1



balloon

+2



present

+2



candy

+2



tulip

+2



heart

+2



party

+2



cupid

+2



friend

+2



chocolate

+3



admirer

+3



carnation

+3



rhyme

+3



poem

+3



fourteenth

+3



bouquet

+4



February

+4

