

Christmas Mystery Sweater Activity

Please visit [themeasuredmom.com](https://www.themeasuredmom.com) to learn how to use this printable:

<https://www.themeasuredmom.com/christmas-problem-solving-activity/>

Thank you for respecting our Terms of Use



The unauthorized reproduction or distribution of a copyrighted work is illegal. Criminal copyright infringement, including infringement without monetary gain, is investigated by the FBI and is punishable by fines and federal imprisonment.

- **YOU MAY** use this file for your own personal, non-commercial use.
- **YOU MAY** print as many copies as you'd like to use in your classroom, home, public library, or tutoring setting.
- **YOU MAY** download this file by visiting <https://www.themeasuredmom.com>.
- **YOU MAY** save this file on your computer.
- **YOU MAY** share the link to the web page where the printable can be found.
- **YOU MAY NOT** link directly to the pdf file. Instead, link to the web page where it can be downloaded.
- **YOU MAY NOT** alter this file or claim this file as your own.
- **YOU MAY NOT** sell or in any way profit from this file. It is also illegal to print this file and sell the printed copy.
- **YOU MAY NOT** use this or any other printable from The Measured Mom on Outschoool.
- **YOU MAY NOT** e-mail this file OR store it on any location where others can download it (Amazon Inspire, Dropbox, Facebook groups and forums, etc.). If you would like to use this file for distance learning, please contact us directly for permission at <https://www.themeasuredmom.com/contact/>.

Credits

Clip art by Kate Hadfield
& Crayon Box Classroom



Check out these resources from the shop!

MYSTERY PROBLEM SOLVING GAMES

PICTURES & CLUE CARDS FOR GR. 1-3

Examples of cards include:

- Guess the Mystery Ball #1**: Clues include "The animal does not spend all of its life in the water", "The animal does not have whiskers", and "The animal is not black or white".
- Guess the Mystery Slumber Party**: Clues include "The animal is not a mammal", "The animal is not a bird", and "The animal is not black or white".
- Guess the Mystery Drink**: Clues include "The animal does not have wings", "The animal does not live in the water", and "The animal is not black or white".

READING COMPREHENSION

Passages with Text-Based Questions

Famous People

Examples of passages include:

- Ruby Bridges**: "Long ago, a first grader went to school. She was the only African American child in the school."
 - 1. What was Ruby Bridges' first grade teacher's name?
 - 2. Why was Ruby Bridges' first grade teacher's name important?
- Thomas Jefferson**: "Thomas Jefferson was born on an estate in Virginia. As a boy, he loved to be outdoors and go fishing. But he also liked to read."
 - 1. What did Thomas Jefferson like to do as a boy?
 - 2. Why was Thomas Jefferson's education important?
- Frederick Douglass**: "Frederick Douglass was born a slave in Maryland. He was only seven years old when he was taken to New York City."
 - 1. What happened when Frederick Douglass was seven years old?
 - 2. Why was Frederick Douglass's education important?
- Helen Keller**: "Helen Keller was born in Alabama. She became blind and deaf at the age of one."
 - 1. What happened when Helen Keller was one year old?
 - 2. Why was Helen Keller's education important?

READER'S THEATER SCRIPTS

10 FAVORITE TALES FOR GRADES 1-3

Examples of scripts include:

- The City Mouse and the Country Mouse**: A script for two mice discussing their lives in the city and country.
- The Gingerbread Man**: A script for a gingerbread man and a woman.
- Little Red Riding Hood**: A script for Little Red Riding Hood and a wolf.

NO-PREP MATH & LITERACY GAMES

120 GAMES STUDENTS CAN PLAY ALONE OR IN PAIRS

Examples of games include:

- Word Puzzles**: Cards with words like "buck", "bunk", "stuck", "hung", "crush", "bump", "jump", "drum", "plug", "sung" and a "What's the Start or Word?" puzzle.
- Math Games**: Cards with math problems like "4+7=10", "5+2=7", "1+7=8", "5+7=12", "4+7=11", "7+7=14", "3+7=10", "5+7=12", "7+7=14", "4+7=11", "6+7=13", "3+7=10", "6+7=13".
- Literacy Games**: Cards with "Find the End Paragraph" puzzles and dice.

HANDWRITING WORKSHEETS

GIANT BUNDLE OF 330 WORKSHEETS

Examples of worksheets include:

- Letter A**: Tracing and writing practice for uppercase and lowercase 'A'.
- Letter B**: Tracing and writing practice for uppercase and lowercase 'B'.
- Letter C**: Tracing and writing practice for uppercase and lowercase 'C'.
- Letter D**: Tracing and writing practice for uppercase and lowercase 'D'.



Find me here

Blog: <https://www.themeasuredmom.com/>

Membership: <https://membership.themeasuredmom.com/>

Podcast: <https://www.themeasuredmom.com/triplerteachingpodcast/>

Teaching Every Reader course: <https://www.teachingeveryreader.com/>

Teaching Every Writer course: <https://www.teachingeverywriter.com/>

Facebook: <https://www.facebook.com/themeasuredmom/>

Pinterest: <https://www.pinterest.com/themeasuredmom/>

Instagram: <https://www.instagram.com/themeasuredmom/>

Contact: <https://www.themeasuredmom.com/contact/>

Printing trouble?

If the file is printing strangely (usually with extra black boxes), please download the free Adobe Reader to your computer. Open and print using that program. 99% of the time, this solves it!

You can get it here: <https://get.adobe.com/reader/>



You're invited to join The Measured Mom Plus!

- our membership site for Pre-K to 3rd grade educators -



- ✓ **Save hours of time** with our one-click printable library. You'll find hundreds of math and literacy resources for Pre-K through third grade.
- ✓ Get **free no-print resources** that are perfect for at-home use and distance learning.
- ✓ Recharge your teaching with on-demand **video workshops and mini-courses** that you can watch 24/7.
- ✓ **Save 33% on all products from The Measured Mom Shop.**

[LEARN MORE](#)



Print a copy of the sweaters and the task cards to keep at a learning center. The sweaters WILL need to be printed in color. Print a recording sheet for each student.

Students can do the activity alone or with a partner. They should read each clue on a task card, one by one. After reading each clue, students should cover the sweater(s) which can *not* be the mystery sweater. By the final clue, students will discover the mystery sweater and should record its letter on the recording sheet.

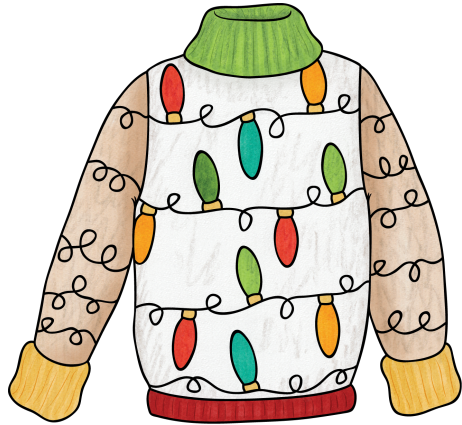
ANSWER KEY

1. I
2. B
3. D
4. F
5. A
6. G
7. E
8. H
9. C



Guess the Mystery Sweater!

©themeasuredmom.com



A



B



C



D



E



F



G



H



I

GUESS THE MYSTERY SWEATER

©themeasuredmom.com

1

- The sweater has sleeves.
- The sweater has V-neck.
- The sweater does not have a face on it.
- The sweater has ornaments on it.

Which one is the mystery sweater?

GUESS THE MYSTERY SWEATER

©themeasuredmom.com

2

- The sweater does not have Christmas lights on it.
- The sweater does not have a V-neck.
- The sweater does not have yellow on it.
- The sweater does not have a smiling face on it.

Which one is the mystery sweater?

GUESS THE MYSTERY SWEATER

©themeasuredmom.com

3

- The sweater does not have diamonds on it.
- The sweater does not have a reindeer on it.
- The sweater does not have a star on it.
- The sweater does not have polka dots on it.
- The sweater has brown on it.
- The sweater has a V-neck.

Which one is the mystery sweater?

GUESS THE MYSTERY SWEATER

©themeasuredmom.com

4

- The sweater does not have patches on the elbows.
- The sweater does not have trees on it.
- The sweater has sleeves.
- The sweater does not have green cuffs.
- The sweater has a face on it.
- The sweater does not have a scarf on it.

Which one is the mystery sweater?

GUESS THE MYSTERY SWEATER

©themeasuredmom.com

5

- The sweater does not have polka dots.
- The sweater does not have green on the sleeves.
- The sweater does not have a V-neck.
- The front of the sweater has something you can hang on a tree.

Which one is the mystery sweater?

GUESS THE MYSTERY SWEATER

©themeasuredmom.com

6

- The sweater has sleeves.
- The sweater has a face on the front.
- On the sweater is something you can wear that is black.
- The sweater has red stripes.

Which one is the mystery sweater?

GUESS THE MYSTERY SWEATER

©themeasuredmom.com

7

- The sweater does not have a face on it.
- The sweater does not have a dessert on it.
- The sweater does not have snowflakes on it.
- The sweater does not have ornaments on it.
- The front of the sweater has polka dots on it.

Which one is the mystery sweater?

GUESS THE MYSTERY SWEATER

©themeasuredmom.com

8

- The sweater does not have black on the sleeves.
- The sweater does not have a tree on the front.
- The sweater has white on the front.
- The front of the sweater does not have something that lights up.
- The sweater does not have blue on the sleeves.
- The sweater has a V-neck.

Which one is the mystery sweater?

GUESS THE MYSTERY SWEATER

©themeasuredmom.com

9

- The sweater does not have a hat on it.
- The sweater does not have ornaments on it.
- The sweater does not have a set of 3 of something on it.
- The sweater does not have a green turtleneck top.

Which one is the mystery sweater?

Name _____

Guess the Mystery Sweater!

©themeasuredmom.com

Use the clues on the task cards to discover each mystery sweater. Write its letter on the correct line.

- ① _____
- ② _____
- ③ _____
- ④ _____
- ⑤ _____
- ⑥ _____
- ⑦ _____
- ⑧ _____
- ⑨ _____

Name _____

Guess the Mystery Sweater!

©themeasuredmom.com

Use the clues on the task cards to discover each mystery sweater. Write its letter on the correct line.

- ① _____
- ② _____
- ③ _____
- ④ _____
- ⑤ _____
- ⑥ _____
- ⑦ _____
- ⑧ _____
- ⑨ _____